

ROSSLARE

# Access Control Essentials

## Product Catalog



## Table of Contents

<b>Software</b>	<b>3</b>
<b>Controllers</b>	<b>5</b>
<b>Readers</b>	<b>9</b>
<b>Biometric Terminals</b>	<b>17</b>
<b>Credentials</b>	<b>19</b>
<b>Accessories</b>	<b>20</b>
<b>Guard Patrol</b>	<b>24</b>

# About Rosslare Group

For over four decades, Rosslare has been delivering state of the art electronics, achieving R&D excellence with breakthroughs such as the first digital battery analyzer and all-weather anti-vandal RFID readers.

Today, Rosslare is home for top industry talent specializing in access control solutions drawn on our rich -global presence and implementation experience. Our tailored solutions, backed by one of the most extensive off-the-shelf product portfolios on the market, will continue to play a role in bringing value, performance and productivity to our industry leading clients worldwide.



ACCESS  
CONTROL



PARKING  
MANAGEMENT



TIME &  
ATTENDANCE



CLEAN ROOM  
MANAGEMENT



GUARD  
MANAGEMENT

## Associations & Certifications

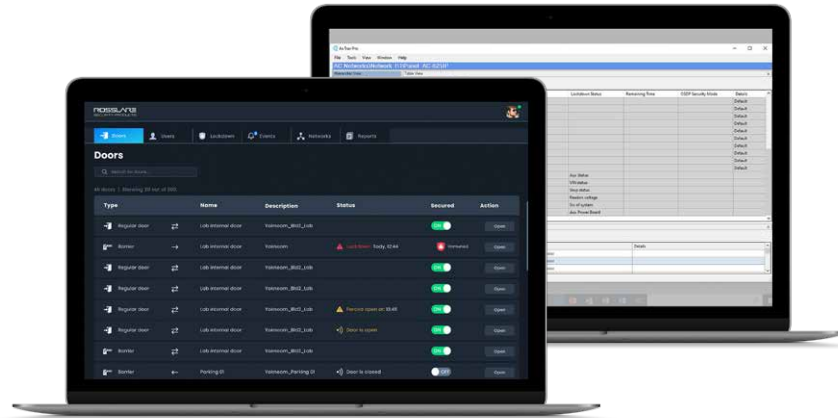
Rosslare's manufacturing processes meet leading international standards and requirements, including TUV Rhineland accreditation, ROHS compliance, and ISO quality standards, as well as ISO 9001, ISO14001 and ISO13485. Flexibly designed to meet the needs of a demanding global market, our products are made to pass certification tests with distinction, including but not limited to CE, FCC, UL, EAC, NOM and RCM.



# Software

**AxTraxPro™**

**AxTraxPro™**  
Management Software



## Web client

For on-going management of the on-premise AxTraxPro™ server. Operators can access the system from their web browsers for daily tasks.

## Enhanced security

Communication is secured from the credential all the way to server using MIFARE DESFire, OSDP V2 Secure Channel, and AES-256 encryption algorithms. Session-based security for bullet proof access avoiding man in the middle or replay attacks.

## Lockdown

Lockdown groups & immunity configuration and management for monitoring and controlling access rights during emergency events.

## Video integration

Integrated with major NVR vendors, including Hikvision and Dahua, for event-based video pop-up and snapshot reports.

## Access control policies

Enhanced access control policies such as access groups, access level, interlock groups, Antipassback and more.

## Identity management

Manage user information, photo, and related access policies and credentials.

## Integrated biometrics

Integrated with Rosslare fingerprint and face Biometric devices to enable improved facility security.

## Up to 16 credentials per user

Supports Face-ID, Fingerprint, PIN-Codes, RFID cards, UHF Tags, NFC-ID, BLE-ID and LPR for vehicles.

## Alarm management and reporting

Generation of reports, Alarm management for operator workflow, and a Rules based Automations Engine

## Time and attendance

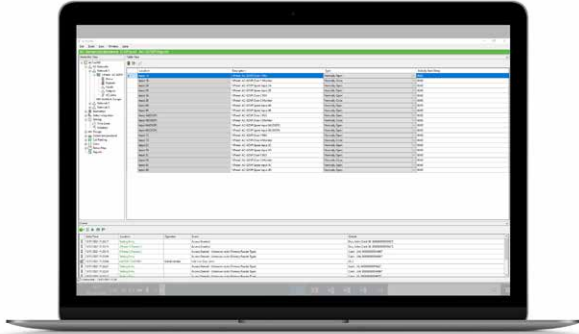
Built-in capability of generating attendance reports with pre-set formats, automatic and customized reports that can be exported and used by accounting systems.

## Car parking management

Integrated with 3rd party and Rosslare products for automated gate opening and touchless experience. Including UHF readers, license plate cameras, and mobile credentials, along with fundamental features related to parking occupancy management and control.

# Software

**AxTraxNG™**



## AxTraxNG™ Management Software



### Video integration

Integrated with major NVR vendors, including Hikvision and Dahua, for event-based video pop-up and snapshot reports.

### Integrated biometrics

Integrated with Rosslare fingerprint and face Biometric devices to enable improved facility security.

### Access control policies

Enhanced access control policies such as access groups, interlock groups, Antipassback and more.

### Identity management

Managing user information, photo, access credentials and related access policies, using new secure login process with dual-factor authentication dialog.

### Up to 16 credentials per user

Supports Face-ID, Fingerprint, PIN-Codes, RFID cards, UHF Tags, NFC-ID, BLE-ID, and LPR for vehicles.

### Alarm management and reporting

Alarm management workflow across devices and smart links automations, email notifications and reports module.

### Software security

Client-server security mechanism including AES 128-bit encryption of database and client communications for a privacy compliant system.

### Time and attendance

Built-in capability of generating attendance reports with pre-set formats, automatic and customized reports.

### Car parking management

Enhanced by Rosslare long range readers, along with fundamental features related to parking occupancy management and control of multitenant environments.



## AxTime™ Time & Attendance Client for AxTraxNG™

- Produces reports from acquired data, such as usage reports, attendance records, visitors, and roll calls
- Password controlled for high level of security, uses the same permission rights of defined operator as AxTraxNG
- User-friendly software with intuitive GUI helps reduce the complexity of installation
- Supports overnight shifts

# Controllers

## Networked Control Panels

### Advanced Scalable Networked Access Platform



AC-825IP

- Supports up to 6 doors (4 Wiegand and 2 OSDP V2 Secure Channel readers / 6 OSDP V2 Secure Channel readers)
- Expandable to 56 doors

### KEY FEATURES

- Scalable and flexible – fits a wide range of applications
- Supports up to 100,000 users in off-line mode, unlimited server based capacity
- Onboard TCP/IP networking with AES 128-bit/256-bit data encryption to an AxTraxNG/AxTraxPro server
- Bi-directional communication for enhanced data transmission speed and reliability
- 500,000 entries event history per controller
- One onboard expansion slot and supports up to 12 additional expansion boards via RSDP bus
- Optional ME-1515 Secure Power Management Enclosure with illumination bar, tamper sensing, power status LED, and lockable C14 power plug

### Expansion Boards



R-805

16 outputs



D-805

4-reader expansion



S-805

16 supervised inputs



P-805

16 supervised inputs and 8 outputs

# Controllers

## Networked Control Panels

### Networked Access Controller



AC-215-B/215IP-B

- Supports up to 2 doors
- Supports 2 readers

### Expandable Networked Access Controller



AC-225-B/225IP-B

- Supports up to 2 doors
- Supports 2 readers
- Expandable to 4 doors using MD-D02B



AC-425-B/425IP-B

- Supports up to 4 doors
- Supports 4 readers
- Expandable to 8 doors using MD-D04B

## KEY FEATURES

- Networked up to 1023 panels
- Supports up to 30,000 users in off-line mode, unlimited server based capacity
- 20,000 event history entries per controller
- Multi-user authentication for high-level security
- Supports a wide range of Wiegand and PIN formats
- Optional ME-1015 Secure Power Management Enclosure with illumination bar, tamper sensing, power status LED, and lockable C14 power plug

### Expansion Boards



MD-D02B

- Optional On-board Expansion for AC-225-B
- 2 reader expansions



MD-D04B

- Optional On-board Expansion for AC-425-B
- 4 reader expansions



MD-IO84B

- Optional Expansion for AC-225-B, AC-425-B
- 8 inputs, 4 outputs

### Enclosures



ME-1015

Secure Power Management Enclosure for the AC-215/225/425/IP-B



ME-1515

Secure Power Management Enclosure for the AC-825IP board or two R/S/D/P-805 expansions

# Controllers

## Entry-Level

### Compact Networked Single Door Controller



AC-115

### Single-Door, 2-Reader Standalone Controller & Software



AC-015

#### KEY FEATURES

- Supports 2 Wiegand 26-bit readers (In/Out)
- 3 programmable modes: Normal, Bypass, Secure
- 2400 users and up to 2000 events
- Time & Attendance with 8 programmable time zones and 24 holidays
- Networking: Up to 8 panels (8 doors) over RS-485 network
- Sounder and speaker for chime, door bell, and alarm event notifications
- 2 outputs: 5 A lock relay, 1 A auxiliary
- Supported by Lite management SW AS-115

Note: The keypad on the controller is for programming purposes only.

#### KEY FEATURES

- Supports 2 Wiegand 26-bit readers
- 3 programmable modes: Normal, Bypass, Secure
- 500 users, events
- 2 tri-colored LEDs
- Sounder and speaker for chime, and siren sounder
- Case tamper
- Input for REX button
- Supported by Lite management SW AS-015

Note: The keypad on the controller is for programming purposes only.

## Standalone

### Anti-Vandal Backlit PIN & Prox Standalone Controller



AC-Q42HB/SB

### Anti-Vandal Piezo PIN & Prox Standalone Controller



AC-Q44

### Anti-Vandal Piezoelectric PIN Standalone Controllers



AC-T43



AC-S43

#### KEY FEATURES

- Standalone anti-vandal controller with 500 dual-code users memory
- 2 tri-colored LED indicators
- 3 user levels and 3 operation modes
- Optical case and back tamper protection
- Piezoelectric (selected models)
- Programmable blue backlit keypad (selected models)



# Controllers

## Standalone

### Outdoor Backlit PIN & Proximity Standalone Controller



AC-F44



AC-G44

#### KEY FEATURES

- 500 dual-code users
- 2 x 2 A relays
- 2 inputs with user programmable logic
- 2 tri-colored LED indicators
- 3 user levels and 3 operation modes
- Optical case and back tamper protection
- Fully-potted, meets IP65
- Lockout feature on wrong entries (keypad/card tamper)
- Bell, chime, siren, and strobe features available with BL-D40
- Antimicrobial technology reduces level of microbes on reader by up to 99.9%

### Indoor PIN / Proximity & PIN Standalone Controller



AC-B32



AC-D32

#### KEY FEATURES

- 125 kHz, ASK type RFID proximity
- 3 user levels and 3 operation modes
- 2 tri-colored LED and buzzer indicators
- Case tamper
- Bell, chime, siren, and strobe features available with BL-D40
- Input for REX button
- 3.5 A lock relay

# Readers

Multi Technology

## Multi-Smart™

**Multi-Smart™  
Reader  
with multiple  
technologies  
support**



AY-K35

### KEY FEATURES

- Supports CSN credentials types including 125 kHz (FSK & ASK), wide range of 13.56 MHz standards including MIFARE® Classic EV1 Sector Read, and Bluetooth® and NFC
- Supports OSDP V2 including secure channel using AES 128 bit encryption for improved security with an extended range, up to 32 addresses
- Fully programmable using Rosslare BLE-Admin app (for QR code see p. 11)
- Touch button for different functions
- Antimicrobial technology reduces level of microbes on reader by up to 99.8%
- IP68 Water and dust resistant, IK08 vandal resistant

## 13.56 MHz – CSN SMART™

**CSN SMART™  
Smart Card  
Reader with  
NFC and  
BLE-ID™**



AY-H6255BT



AY-H6355BT

### KEY FEATURES

- Supports Rosslare BLE-ID and reads most 13.56 MHz contactless credentials (for QR code see p. 11)
- Configurable using BLE-Admin mobile app (for QR code see p. 11)
- Eight keypad transmission formats are available
- Addressable OSDP connectivity, up to 32 addresses using DIP switches
- Optional desktop reader enrollment station DR-U955BT

### Rosslare Mobile Apps



#### Rosslare BLE-Admin™ Configuration App

Available for iOS  
and Android



#### Rosslare BLE-ID™ Mobile Credentials App

Available for iOS (Bluetooth)  
and Android (Bluetooth & NFC)

# Readers

Multi Technology

13.56 MHz – CSN SELECT™

## Smart Card Reader



AY-M6255

AY-K6255

AY-L6255

AY-H6255

AY-Q6255

Anti-vandal

### KEY FEATURES

- Reads most 13.56 MHz contactless credentials
- NFC-ID support using Rosslares BLE-ID mobile app (for QR code see p. 11)
- Supports OSDP V2 including secure channel using AES 128 bit encryption for improved security with an extended range, up to 32 addresses
- MIFARE Classic sector reading support
- Fully configurable using configuration card (requires CS-CCT Configuration Card Tool)
- Water and dust resistant (IP65 for dip switch models and IP68 for non-DIP switch models), IK08 vandal resistant without the bezel

## Convertible Smart Card Reader



AYC-M6355

AYC-H6355

AYC-Q6355

Anti-vandal

### KEY FEATURES

- Reads most 13.56 MHz contactless credentials
- NFC-ID support using Rosslares BLE-ID mobile app (for QR code see p. 11)
- Supports OSDP V2 including secure channel using AES 128 bit encryption for improved security with an extended range, up to 32 addresses
- MIFARE Classic sector reading support
- Fully configurable using configuration card (requires CS-CCT Configuration Card Tool)
- Water and dust resistant (IP65 for dip switch models and IP68 for non-DIP switch models), IK08 vandal resistant without the bezel

# Readers

Multi Technology

## 13.56 MHz – CSN SELECT™

**Configuration Card  
Programmer and  
13.56 MHz  
Smartcard  
CSN Desktop  
Enrollment Reader**



DR-6255

### KEY FEATURES

- Compatible with Rosslare AxTrax management system
- USB connectivity to PC
- Bi-colored LED for status notification
- Configuration card programmer
- Supported credentials: 13.56 MHz Smartcard CSN (ISO14443A/B, ISO15693, ISO18092 and more)

## UHF Long Range

**Long range  
UHF**



AY-U915BT

**Extended  
long-range  
UHF**



AY-U920BT

### KEY FEATURES

- AY-U920BT Read range up to 12 m (39 ft) – UHF and Bluetooth
- AY-U915BT Read range up to 12 m (39 ft) – Bluetooth, and 6 m (19 ft) – UHF
- Supports UHF-RFID and BLE-ID™ (Android and iOS) credentials
- Supports OSDP V2 including secure channel
- Single and multi-credential modes
- Built from robust materials, supports IP65 rating
- Readers and credentials can be factory-customized to allow only recognized credentials to pass to the controller
- Rosslare BLE-Admin™ mobile application for fast deployment, simple configuration of LED and buzzer behaviour, Wiegand format, OSDP address, secure channel key, firmware upgrade over the air (for QR code see p. 11)
- IP67 Water and dust resistant, IK10 vandal resistant

**Multi-technology  
Desktop Enrollment  
Reader with  
Bluetooth support**



DR-U955BT

### KEY FEATURES

- Compatible with Rosslare AxTrax management system
- USB connectivity to PC
- Bi-colored LED for status notification
- Supported credentials: 13.56 MHz Smartcard CSN, Rosslare BLE-ID™ and UHF RFID

# Readers

Multi Technology

## RF Long Range

### Extra Long-Range RF Reader



AY-L23

#### AY-L23

##### KEY FEATURES

- Can operate as a standalone controller (with external relay)
- Optical back tamper
- Can operate only with SA-23-B2/B4 remote controls
- Read range of 70 m (229.6 ft.)
- Two different Wiegand output formats
- Note: Does not read RFID cards

### 2-Channel Transmitter for AY-L23 Reader



SA-23-B2

#### SA-23-B2

##### KEY FEATURES

- In Standalone mode, each button on the SA-23-B2 can be registered to activate different outputs in the AY-L23

### 4-Channel Transmitter for AY-L23 Reader



SA-23-B4

#### SA-23-B4

##### KEY FEATURES

- Each button is programmed to output a different Wiegand ID for flexible and advanced access control operation

# Readers

Single Technology

13.56 MHz – Open to Secure® – O2S®

**MIFARE® Classic  
and MIFARE  
Plus®/DESFire®  
EV1 Reader**



## KEY FEATURES

- The platform enables to choose between open key and pre-configured readers and credentials
- User friendly tools to configure desfire readers and program user cards
- Supported by CP-R27 programmer and AS-B01 software for user and configuration card creation
- MIFARE Classic sector reading support
- High security with AES 128-bit, compatible with MIFARE Plus and MIFARE DESFire EV1
- CSN reading with MIFARE Classic EV1
- Supports OSDP V2 including secure channel for the AY-X6X80 readers
- Tri-colored LED operation and buzzer
- Antimicrobial technology reduces level of microbes on reader by up to 99.9%
- IP68 Water and dust resistant, IK08 vandal resistant

**DESFire EV1 /  
MIFARE Classic  
EV1 Desktop  
Programmer**



CP-R27

**MIFARE® Classic  
and DESFire  
EV1 Desktop  
Enrollment  
Reader**



DR-6280

## KEY FEATURES

- Compatible with the AS-B01 configuration tool
- USB connectivity to PC
- Configuration and users card programmer
- Contactless smart card and desktop programmer to read/write 13.56 MHz technology, including, MIFARE® and DESFire® EV1. It is compliant with ISO14443A.

## KEY FEATURES

- Compatible with Rosslare AxTrax management system
- USB connectivity to PC
- Bi-colored LED for status notification
- Supported credentials: MIFARE Classic EV1 and MIFARE DESFire EV1

# Readers

Single Technology

## 13.56 MHz – MIFARE® Classic CSN

**Touch Keypad  
Reader with RFID**



AY-T6350

### KEY FEATURES

- 13.56 MHz MIFARE RFID
- Wiegand 26-bit to 54-bit
- IP68 – a fully potted housing with top cover for all weather applications

## 13.56 MHz – MIFARE® Sector

**MIFARE®  
Contactless  
Smart Card  
Sector Reader**



AY-M26

### KEY FEATURES

- 13.56 MHz MIFARE® CLASSIC EV1
- Full sector reading support
- Programmable multi-format output
- Epoxy-potted – meets IP65, waterproof
- Optical back tamper
- Fully supported by CP-R26 programmer and AS-B01 software

**MIFARE®  
Contactless  
Smart Card  
Sector Reader**



AY-W6260



AY-W6360



AY-Q6260

Anti-vandal



AY-Q6360

Anti-vandal

# Readers

Single Technology

125 kHz – PROX and goPROX®

## Proximity Reader



AY-K12C

AY-L12C

AY-H12C

AY-M12C

AY-Q12C

Anti-vandal

### KEY FEATURES

- Reads 125 kHz RFID
- Wiegand 26-bit, Clock & Data, RS-232 (other Wiegand formats available per request)
- Tri-colored LED
- 2 x LED color control inputs
- Hold control input

## goPROX® & PIN Convertible Reader/Controller

GO PROX®  
BY ROSSLARS



AYC-G60

AYC-F60

### KEY FEATURES

- Convertible to standalone controller using PS-C25TB Power Management Enclosure or the MD-25TB Secure Relay I/O Module
- Reads all HID Prox credentials (125 kHz FSK) using Genuine HID Technology™
- Multi-format keypad
- Programmable patented backlit keypad
- Antimicrobial technology that reduces the level of microbes on reader by up to 99.9%



# Readers

Single Technology

125 kHz – PROX and goPROX®

**goPROX® & PIN  
Convertible  
Reader/  
Controller**

**GO PROX®**  
BY ROSSLARE



AYC-Q60



AYC-E60N/B



## KEY FEATURES

- Convertible to standalone controller using PS-C25TB Power Management Enclosure or the MD-25TB Secure Relay I/O Module
- Reads all HID Prox credentials (125 kHz FSK) using Genuine HID Technology™
- Ultra-Slim Mullion (AYC-E60N/B)

**Convertible  
Ultra-Slim  
PIN/Proximity  
Reader/  
Controller**



AYC-E65B/BG/BB



## KEY FEATURES

- Convertible to standalone controller using PS-C25TB Power Management Enclosure or the MD-25TB Secure Relay I/O Module
- Ultra-slim flush mount design
- Built-in piezoelectric keypad for PIN code entry
- Programmable patented blue backlit keypad

**Convertible  
Anti-Vandal  
Proximity &  
PIN Reader/  
Controller**



AYC-Q64B

## KEY FEATURES

- Convertible to standalone controller using PS-C25TB Power Management Enclosure or the MD-25TB Secure Relay I/O Module
- Programmable patented blue backlit keypad on selected models

**EM and Temic  
Card Desktop  
Enrollment  
Reader**



DR-12C

## KEY FEATURES

- Compatible with Rosslare AxTrax management system
- USB connectivity to PC
- Bi-colored LED for status notification
- Supported credentials: EM, TEMIC cards

# Biometric Terminals

## BIO8000 Series

### Fingerprint & Card Reader



AY-B8520  
AY-B8550

AY-B8520/AY-B8550

#### KEY FEATURES

- Encrypted data
- RFID card reader – 125 kHz (EM) / 13.56 MHz (MIFARE)
- Up to 7000 fingerprint templates (loading more than 3000 templates is not recommended due to extended response time)
- Recognition in less than 1 second
- TCP/IP, Wiegand 26-bit, RS-485



AY-B8620  
AY-B8650

AY-B8620/AY-B8650

#### KEY FEATURES

- Encrypted data
- RFID card reader – 125 kHz (EM) / 13.56 MHz (MIFARE)
- Up to 7000 fingerprint templates (loading more than 3000 templates is not recommended due to extended response time)
- Recognition in less than 1 second
- Rugged metal case for additional protection
- Anti-Vandal case (IK10) & waterproof (IP65)
- TCP/IP, Wiegand 26-bit, RS-485

### USB Fingerprint Enrollment Desktop Reader for the Biometric Reader 8000 Series



DR-B8000

#### KEY FEATURES

- Compatible with Rosslare AxTrax and BIO8000 management software
- USB connectivity to PC
- Optical sensor with glass scanning surface
- Acquire high resolution images
- Supports the 8000 biometric series

### Related Software

#### Rosslare Bio8000

Standalone BIO8000 terminals management software, with access control and T&A functionality

#### AxTraxPro™ / AxTraxNG™

Fully integrated with AxTrax server for seamless operation, template management and access

# Biometric Terminals

## BIO9000 Series

### Fingerprint & Card Reader with Rosslare BLE-ID™



AY-B9120BT/ AY-B9150BT

### Fingerprint & Card reader with built-in camera, LCD and BLE-ID



AY-B9250BT

#### KEY FEATURES

- Liveness check in less than 1 second
- Encrypted data
- RFID card reader – 125 kHz (EM) / 13.56 MHz (MIFARE)
- Dual authentication (card and fingerprint) for improved security
- Built-in camera for event recording and recreation
- Rosslare BLE-ID™ app support for Bluetooth only (for QR code see p. 11)
- 20,000 fingerprint templates
- Waterproof (IP65)
- TCP/IP, Wiegand 26-bit/34-bit, RS-485
- Built-in relay

#### KEY FEATURES

- Liveness check in less than 1 second
- Encrypted data
- RFID card reader – 13.56 MHz (MIFARE)
- Dual authentication (card and fingerprint) for improved security
- Four touch function keys and LCD display
- Camera for recording photo snapshots based on terminal activity
- Rosslare BLE-ID™ app support for Bluetooth only (for QR code see p. 11)
- 20,000 fingerprint templates
- Waterproof (IP65)
- TCP/IP, Wiegand 26-bit/34-bit, RS-485
- Built-in relay

### Face & Fingerprint Recognition Reader with dual RFID Card Reader & PIN Code



AY-B9350

### USB Fingerprint Enrollment Desktop Reader for the Biometric Reader 9000 Series



DR-B9000

#### KEY FEATURES

- Fingerprint Liveness check – in less than 1 second
- Encrypted data
- RFID card reader – 125 kHz (EM) & 13.56 MHz (MIFARE)
- 100,000 fingerprint templates & 10,000 face templates
- TCP/IP, Wiegand 26-bit/34-bit, RS-485
- Built-in relay

#### KEY FEATURES

- Compatible with Rosslare AxTrax and BIO9000 management software
- USB connectivity to PC
- Fingerprint Liveness check optical sensor
- Acquire high resolution images
- Supports the 9000 biometric series

# Biometric Terminals

## BIO9000 Series

### Related Software

#### Rosslare Bio9000

Standalone BIO9000 terminals management software, with access control and T&A functionality

#### AxTraxPro™ / AxTraxNG™

Fully integrated with AxTrax server for seamless operation, template management and access

# Credentials



#### NFC and BLE-ID for Mobile Devices

- Easy to use
- Ideal for no-touch operation
- Supports NFC for Android and BLE for Android & iOS
- Fits any access control system



#### 13.56 MHz MIFARE Classic EV1 Credentials

- Great quality and range
- Full customization services
- Comes in variety of form factors
- Original NXP chip inside



#### 13.56 MHz MIFARE Plus & DESFire EV1

- Offers the MAXIMUM level of security
- Comes in variety of form factors
- Pre-formatted and pre-programmed
- Supports multi-applications



#### UHF Alien Higgs-3 Credentials

- Suits any vehicle related application
- Offer great reading distance
- Comes in variety of form factors
- Ideal for hands free and no-touch operation



#### 125 kHz EM and Temic Credentials

- EM and Temic
- Comes in variety of form factors
- Highly reliable, and interference-free
- Strong, sturdy, and robust

# Accessories

## EX (REX) Buttons

### Analog Piezoelectric REX Switch with Toggle Option



EX-06



EX-16

### Digital Piezoelectric REX Switch with Toggle Option



EX-07



EX-17

### KEY FEATURES

- Highly-sensitive piezoelectric REX button series
- Adjustable lock release time using potentiometer
- Up to 2 A switching current
- Standard single US gang box and mullion sizes
- Basic, non-powered analog model (EX-06, EX-16)
- Advanced digital model (EX-07, EX-17)
- Externally controlled lighting and built-in sounder
- External input for alarm/evacuation light flashing indications
- Stainless steel surface and potted, sealed interior with external connections and setup compartment (EX-06, EX-16, EX-07, EX-17)
- Custom labeling per demand

### Passive Infrared Motion Sensor Switch



EX-H22N



EX-M22

Anti-Vandal

### Plastic Slim Piezoelectric REX Switch with Light Ring



EX-H04



EX-M04

# Accessories

## PX Switches

Small Metallic  
Piezoelectric  
Push Button



PX-13



PX-23

• Spot LED



PX-34

• Toggle Option  
• Ring LED

## Electromagnetic Locks

Electromagnetic  
Lock with  
Lock Status &  
Indicator



LK-M12L

1200 lb / 540 kg



LK-M06L

600 lb / 270 kg



LK-M03

300 lb / 134 kg

## Wired Sensors

Digital  
Wired Pet  
Immune  
PIR Motion  
Detector



SA-01PW

Analog  
Wired PET  
Immune  
Passive  
IR Motion  
Detector



PYR-4122

Advanced  
Compact  
Spherical  
Lens PIR  
Detector



PYR-0021

Dual PIR /  
Microwave  
Motion  
Detector  
with Anti-  
masking



PYR-1021

Ceiling PIR  
Motion  
Detector



PYR-2023

Wired  
Ceiling PIR  
Motion  
Detector



PYR-3021

# Accessories

## Wired Sensors

**Photoelectric  
Smoke  
Detector**



SA-64-2W



SA-64-3W

**Magnetic  
Contact**



SH-02

**Cylindrical  
Magnetic  
Contact**



SH-12

**Wired Flood  
Detector**



SA-31

**Hardwired  
Vibration  
Detector**



SA-21

## Wired Sensors & Sounders

**Piezoelectric  
Siren and  
Strobe**



SA-95A/L

Wired Mini



SA-96A/L

Hardwired



SA-91A/L

Advanced Wired

**Compact  
Bell and  
Strobe  
Unit for  
Standalone  
Controllers**



BL-D40

**Wall and  
Ceiling  
Bracket  
for PIR  
Detectors**



BR-12

**Wall  
Bracket  
for PIR  
Detectors**



BR-11

**Swivel Wall  
and Ceiling  
Bracket  
for PIR  
Detectors**



BR-41

# Accessories

## Connectivity & Cabling

**Wireless  
Access  
Control Door  
Interface  
Near Unit /  
Far Unit**



MD-W11N/F

**Wireless  
Access  
Control  
Interface  
Power  
Backup Unit**



MD-W11BP

### KEY FEATURES

- Maximum range up to 300 m (985 ft) outdoors
- Overall response time of 500 ms when used with Rosslare's controllers and readers
- Compatible with all of Rosslare's readers and with any third-party units using standard Wiegand format of PIN code and credentials
- Case and wall tamper protection

## Power Supplies and Batteries

**Multipurpose  
Power  
Management  
Enclosure**



ME-0515M

**Power  
Management  
Enclosure  
with built in  
Secure Relay  
I/O Module**



PS-C25TB

**Secure  
Relay I/O  
Module**



MD-25TB

**Compact  
12 V Sealed  
Lead Acid  
Battery**



BT-05

**Compact  
12 V NiMH  
Battery**



BT-16



# Guard Patrol

## DigiTool® System

**Data  
Acquisition  
Reader**



GC-01

**Data  
Acquisition  
Reader  
Base /  
Charger**



GC-02

**Data  
Acquisition  
Reader  
Charger**



GC-03

**iButton  
Location  
Tag**



GA-01

**Event  
Wallet**



GA-02

**USB to  
RS-232  
Converter  
Cable**



MD-24U

**Leather  
Holster  
for GC-01**



GA-06

**DigiTool®  
Reports  
Lite™ PC  
Software**



GS-01

\* This catalog contains items that may not be available in your region.  
Contact your regional sales representative/Rosslare's distribution partner to check availability.

**Disclaimer:** The data contained within Rosslare's catalogue is intended to provide only general information about products available for purchase from Rosslare Enterprises Limited and its associated companies ("Rosslare"). Reasonable efforts have been made to ensure the accuracy of this information. However, it might contain typographic errors, inaccuracies, or omissions that may relate to product descriptions, visual pictures, specifications, and other details. All technical specifications weights, measures and colors shown, are best approximations. Rosslare can not be held responsible and assumes no legal liability for the accuracy or completeness of the information provided. Rosslare reserves the right to change, delete, or otherwise modify the information, which is represented, at any time, without any prior notice.

© 2022 Rosslare Enterprises Limited. All Rights Reserved.

## Rosslare Global Offices

### APAC, MENA (HEADQUARTERS)

#### **Rosslare Enterprises Ltd.**

Sales: [sales.apac@rosslaresecurity.com](mailto:sales.apac@rosslaresecurity.com)

Support: [support.apac@rosslaresecurity.com](mailto:support.apac@rosslaresecurity.com)

### CHINA

#### **Rosslare Electronics (Shenzhen) Ltd.**

Sales: [sales.cn@rosslaresecurity.com](mailto:sales.cn@rosslaresecurity.com)

Support: [support.cn@rosslaresecurity.com](mailto:support.cn@rosslaresecurity.com)

### EUROPE / ISRAEL

#### **Rosslare Israel Ltd.**

Sales: [sales.eu@rosslaresecurity.com](mailto:sales.eu@rosslaresecurity.com)

Support: [support.eu@rosslaresecurity.com](mailto:support.eu@rosslaresecurity.com)

### INDIA

#### **Rosslare Electronics India Pvt Ltd.**

Sales email: [sales.in@rosslaresecurity.com](mailto:sales.in@rosslaresecurity.com)

Support email: [support.in@rosslaresecurity.com](mailto:support.in@rosslaresecurity.com)

### LATIN AMERICA

#### **Rosslare Latin America**

Sales: [sales.la@rosslaresecurity.com](mailto:sales.la@rosslaresecurity.com)

Support: [support.la@rosslaresecurity.com](mailto:support.la@rosslaresecurity.com)

### NORTH AMERICA & CANADA

#### **Rosslare Security Products, Inc.**

Sales: [sales.na@rosslaresecurity.com](mailto:sales.na@rosslaresecurity.com)

Support: [support.na@rosslaresecurity.com](mailto:support.na@rosslaresecurity.com)