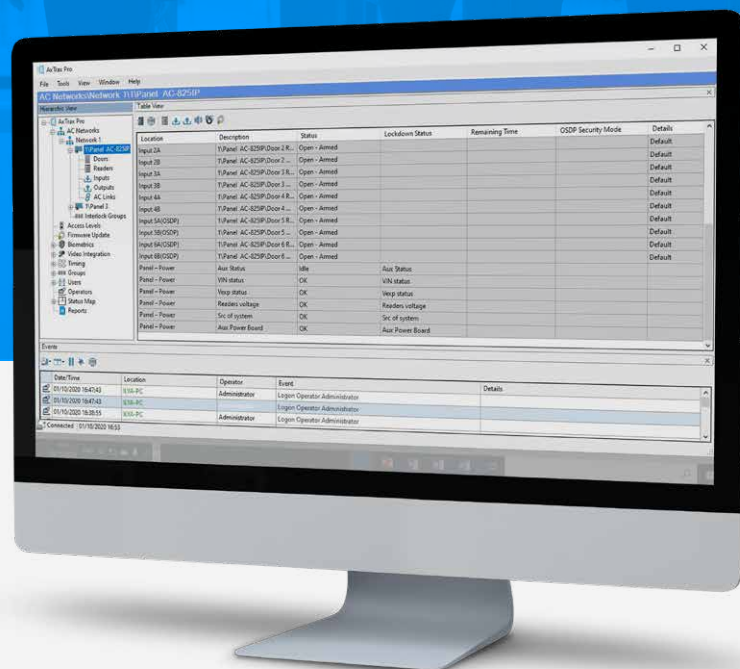


ROSSLARE



 **AxTraxPro™**

AxTraxPro™

The All-purpose Access Control Management Software

Rosslare introduces the new AxTraxPro™ client-server management software that enables setting automated physical access control policy across facilities, perfect for today's most demanding users and organizations. The system can manage thousands of Rosslare networked access controllers and users, providing enhanced security with excellent system scalability and performance.

AxTraxPro™ offers a friendly desktop, web & mobile app clients that allows system operators to locally or remotely manage their on-premise AxTraxPro™ servers.

Integrated with video management systems and combining Rosslare state-of-the-art access control components – including controllers, readers, credentials and other peripherals – the complete ecosystem is optimal for almost any need.

Flexible and feature-rich management software

AxTraxPro™ enables organizations to meet their dynamic needs with agility and performance like never before.

Leveraging a set of features designed to maximize utility and security, AxTraxPro™ includes new tools to save time and resources when building the physical access control environment.

Mobile app & web clients

For on-going management of the on-premise AxTraxPro™ server. Operators can access the system from their web interface and mobile phones for daily tasks.

Enhanced security

Communication is secured from the credential all the way to server using advanced encryption algorithms. Session-based security for bullet proof access avoiding man in the middle or replay attacks.

Lockdown

For lockdown groups & immunity configuration and management, provides emergency response and enhanced control mechanism for stopping access rights in any group of access points, allowing securing, clearing, and controlling the facility quickly and effectively in the affected areas.

Video integration

Enables Milestone XProtect® to act as the frontend system, providing operators with the ability to manage access control events, alarms and remote doors operation through the XProtect VMS.

In addition Hikvision and Dahua NVR integrations are available, for event-based video pop-up and snapshot reports.

Integrated biometrics

Integrated with Rosslare and third-party fingerprint and face Biometric devices to enable improved facility security.

Simple to use and encrypted automatic template distribution makes it ideal for large scale network deployments.

Access control policies

Enhanced access control policies such as multiple access group, interlock groups, Antipassback and more.

Identity management

Manage user information, photo, and related access policies and credentials.

Up to 16 credentials per user

Supports Face-ID, Fingerprint, PIN-Codes, RFID cards, UHF Tags, NFC-ID, BLE-ID and LPR for vehicles.

Alarm management and reporting

Alarm management workflow across devices and smart links automations ensures that your security center is responsive. Email notifications make sure the right people are informed. For a secure audit trail, the reports module allows creation of instant, custom and insightful reports for operations administration.



Ironclad software security

A new client-server security mechanism including AES 256-bit encryption communication for a privacy compliant system.

Time and attendance

Built-in capability of generating attendance reports with pre-set formats, automatic and customized reports that can be exported and used by accounting systems.

Car parking management

Integrated with third-party and Rosslare products for automated gate opening and touchless experience. Including UHF readers, license plate cameras, and mobile credentials, along with fundamental features related to parking occupancy management and control.

Benefits that resonate across the organization

- + Globally proven software with tens of thousands of active installations
- + Flexible features make it easy to manage, install and use for enhanced productivity
- + Scalable to enable implementation of projects from a single door to thousands of access points
- + Easily integrates with any third-party software and tools using dedicated GraphQL API
- + Wide range of Rosslare Networked Controllers and Expansions to win projects with custom fit feature-set and price point



Extensive hardware support

AxTraxPro™ management software supports the entire Rosslare product line. Below are some selected items with seamless AxTraxPro™ integration.



AC-825IP



R-805



S-805



D-805



P-805

Networked Controllers & Expansions



AY-U920BT



AY-U915BT



AY-H6355BT



AY-K35

Readers



AY-B9120BT/ AY-B9150BT



AY-B9250BT



AY-B9350

Biometric Terminals



Credentials

Featuring enhanced security

AxTraxPro™ enables Rosslare intelligent controllers, expansions, and readers to operate under Open Supervised Device Protocol (OSDP V2 secure channel), which became a common requirement in high value projects. The OSDP standard, together with Secure Channel Protocol (SCP), provides highly secure bi-directional communications and advanced security features for connecting between OSDP devices.

Rosslare OSDP implementation is compliant with the SIA standard to enable all third-party readers and controllers to operate seamlessly.

Communication between the controller and the AxTraxPro™ server is encrypted by a 256-bit key.



ROSSLARE

Web client

Leveraging web technologies to allow operators, managers and administrators to control and manage their AxTraxPro™ software locally or remotely, including friendly web interface designed for ease of use and enhanced productivity.

MAIN FEATURES

Door management

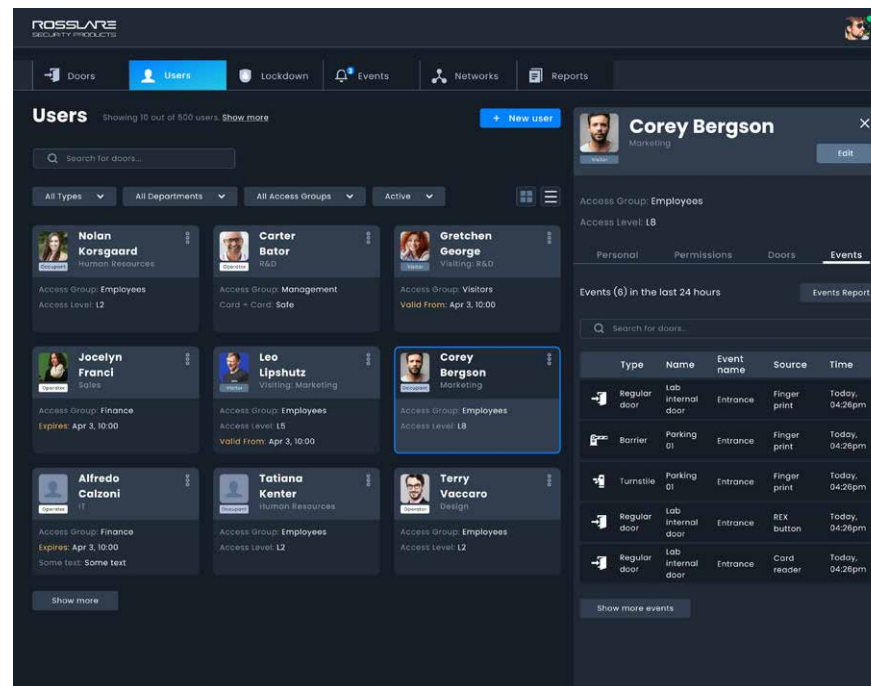
Remotely release a door manually or using a timer, view managed doors with quick search, and monitor status of each door live by view its status (open/close), engaged alarms, users view per door and much more.

Users management

Managing access ID holders, operators and visitors, with a Table view, Quick Search, User Form, Set Valid Dates, Set Counter, Credentials management, Access Groups, Handicap/Accessibility Level, Tracking User Access Events, and more.

Lockdown

Managing lockdowns, including groups, modes, and users' immunity settings to a lockdown group.

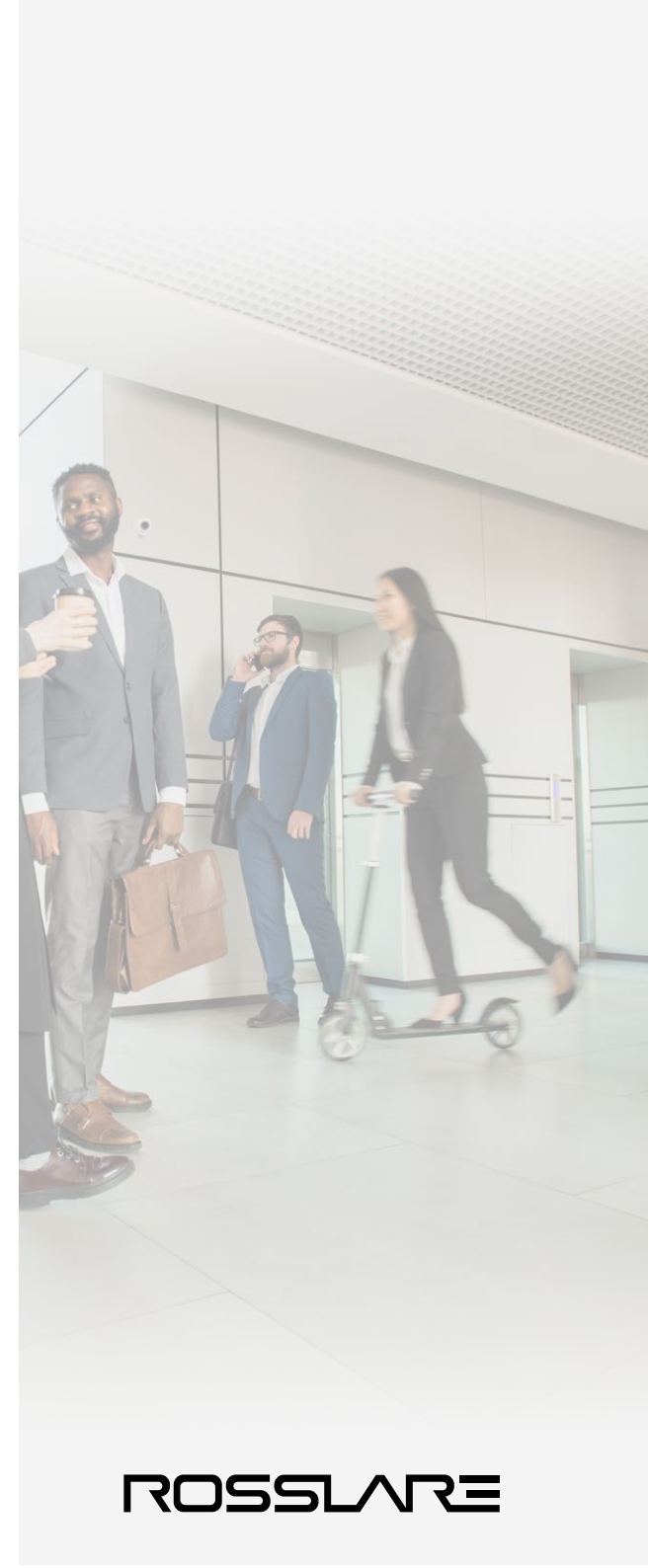


Events, alerts and reports

View events as they occur and use historical information to generate a variety of reports from ready-made and customized templates.

Network management

Simple to use management interface for system operators showing the details of all the hardware and peripherals in the system, including connectivity and operating statuses.

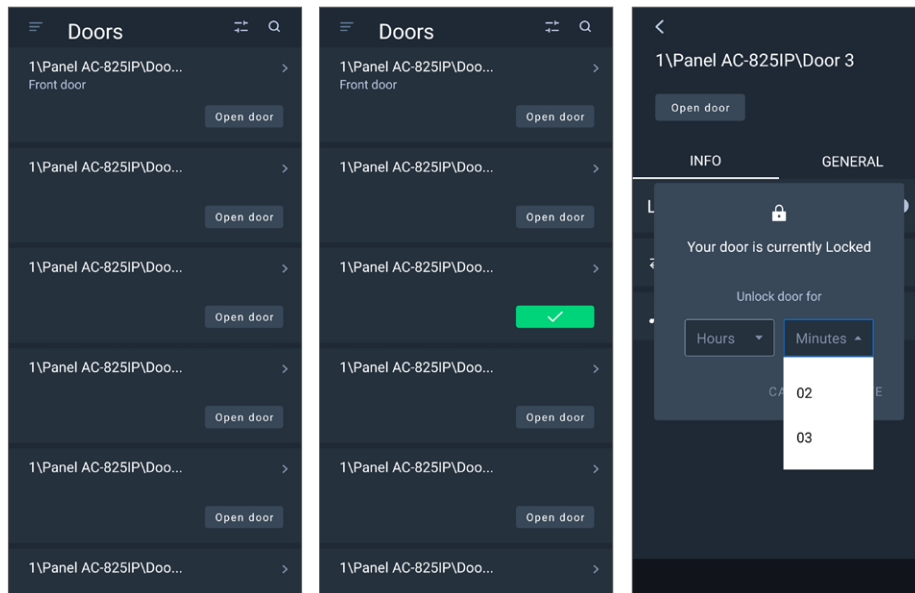


Mobile app

The mobile app enables operators, managers, and administrators to locally or remotely control and manage their AxTraxPro™ software. It offers a user-friendly mobile application designed for easy execution of daily tasks.

Door management

Release a door remotely, either manually or using a timer, view managed doors swiftly via quick search, and monitor the live status of each door by observing its open or closed status.



Lockdown groups & immunity

The lockdown functionality of AxTraxPro™ allows organizations to develop their physical security protocols across multiple sites and access points. The lockdown group interface enables lockdown areas to be set ad hoc.

Each lockdown group is operated with the following options:

- Defined areas (groups of access points) that can be locked down manually or when triggered by a predefined security event
- Easy to set-up immunity assignment for users to override and have access during lockdowns
- Integration of lockdown with smart links automation to define the rules in which the system should behave when events occur in the access control panel
- Easy to define credentials such as PIN code or card, and system hardware inputs that enable lockdown or release lockdown modes
- Features a lockdown timer with remaining time display for full online and offline safety management

Open for integrations with AxTraxPro™ GraphQL API

AxTraxPro™ comprehensive API makes it easy to integrate and deploy various third-party applications, such as security, safety, and time & attendance. The API allows for access system functionality, controlling and monitoring many aspects of site access requirements.

Wide credentials coverage with distinction

The AxTraxPro™ caters to various users in the organization, from standard users with a single credential to ones with mobile devices, vehicle, multiple cards, biometrics and more.

AxTraxPro™ recognizes the credential type used, and can enroll multiple credentials per single user, enabling to employ advanced dual-factor authentication for high security areas.

AxTraxPro™ is compatible with the full range of credentials technologies, enabling multiple enrollment stations to be deployed in distributed organizations.

Credentials technologies supported by AxTraxPro™



PIN Code



NFC



BLE



RFID card



UHF tags
for vehicles
and assets



Car license
plate



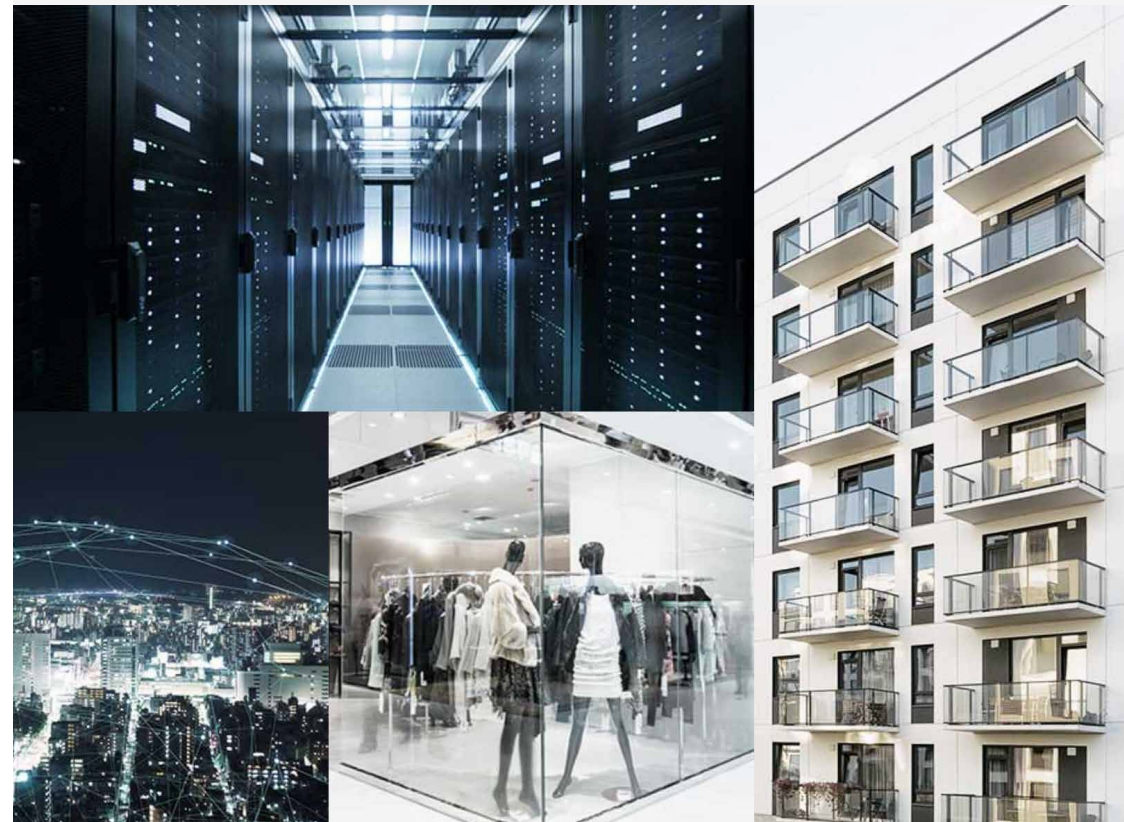
Fingerprint
biometrics



Face
biometrics

Fit for any industry and application

AxTraxPro™ software management system is flexible and versatile with a long history accommodating the needs of diverse industries and applications, serving large and small organizations in Educational, Healthcare, Residential, Enterprise & Corporate, Data Centers, Smart City, Retail, and Banking & Finance.



AxTraxPro™ Architecture Diagram

