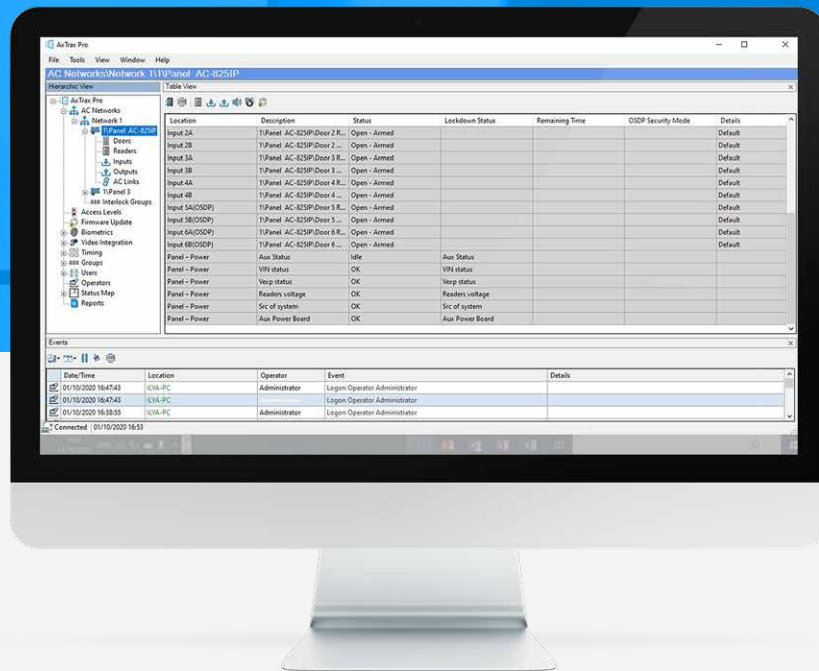


# AxTraxPro™ Integration with IDEMIA Biometric Solutions



Rosslare's AxTraxPro™ access control management software is now integrated with IDEMIA biometric solutions. Thanks to this seamless integration, AxTraxPro™ customers can benefit from comprehensive secure biometric solutions by IDEMIA, including Biometrics on Card, facial recognition, and people management, all adhering to the highest industry standards for biometrics.

# Key features and benefits

## IDEMIA Biometric On Card Integration

- + On-Card Fingerprint Storage**  
Biometric data is stored directly on MIFARE DESFire cards for enhanced security, biometric data is not stored in any other location but the user's card.
- + Flexible Authentication Modes**  
Select from card-only, card and fingerprint, or card, fingerprint, and PIN.
- + Customizable Credentials**  
Generate Credential IDs randomly, manually, or using the card's serial number (CSN).
- + Multi-Finger Enrollment**  
Support for up to four fingerprints per card as well as a Duress finger.
- + Secure solution**  
Utilize DESFire encryption for highest level of biometric data protection.

## IDEMIA Face Recognition Terminal Integration

- + VisionPass Terminal Support**  
Utilize IDEMIA VisionPass for secure, TLS-encrypted facial recognition.
- + Streamlined Face Enrollment**  
Easily enroll biometric credentials directly from terminals for better user experience.
- + Wiegand Protocol Compatibility**  
Choose from multiple Wiegand formats for tailored setups.
- + Enhanced Security**  
Encrypted terminal communications using TLS certificates, encrypted information is stored securely into AxTraxPro™ database.

## Single User, Device, and Enrollment Management System

- + Unified Solution**  
Managed and controlled by AxTraxPro™ and provides an "all-in-one" system within a single interface.
- + Scalability**  
Connects and manages up to 2000 biometric devices.
- + Flexible Integration**  
Integrates seamlessly with the IDEMIA biometric access solutions and is easily installed on new and existing AxTraxPro™ systems.

## Compatible hardware and software products

Rosslare AxTraxPro™ integrates seamlessly with the IDEMIA Vision Pass biometric terminals, as well as, Biometric On-Card Morpho Access Sigma Lite devices to provide secure and streamline access.



AxTraxPro™ Management Software



AC-825IP

AC-425IP

AC-225IP

AC-215IP

Control Panels



MA SIGMA Lite

MA SIGMA Lite+

Biometric On-Card Terminals



MSO 330

MSO 1300

Enrollment Devices



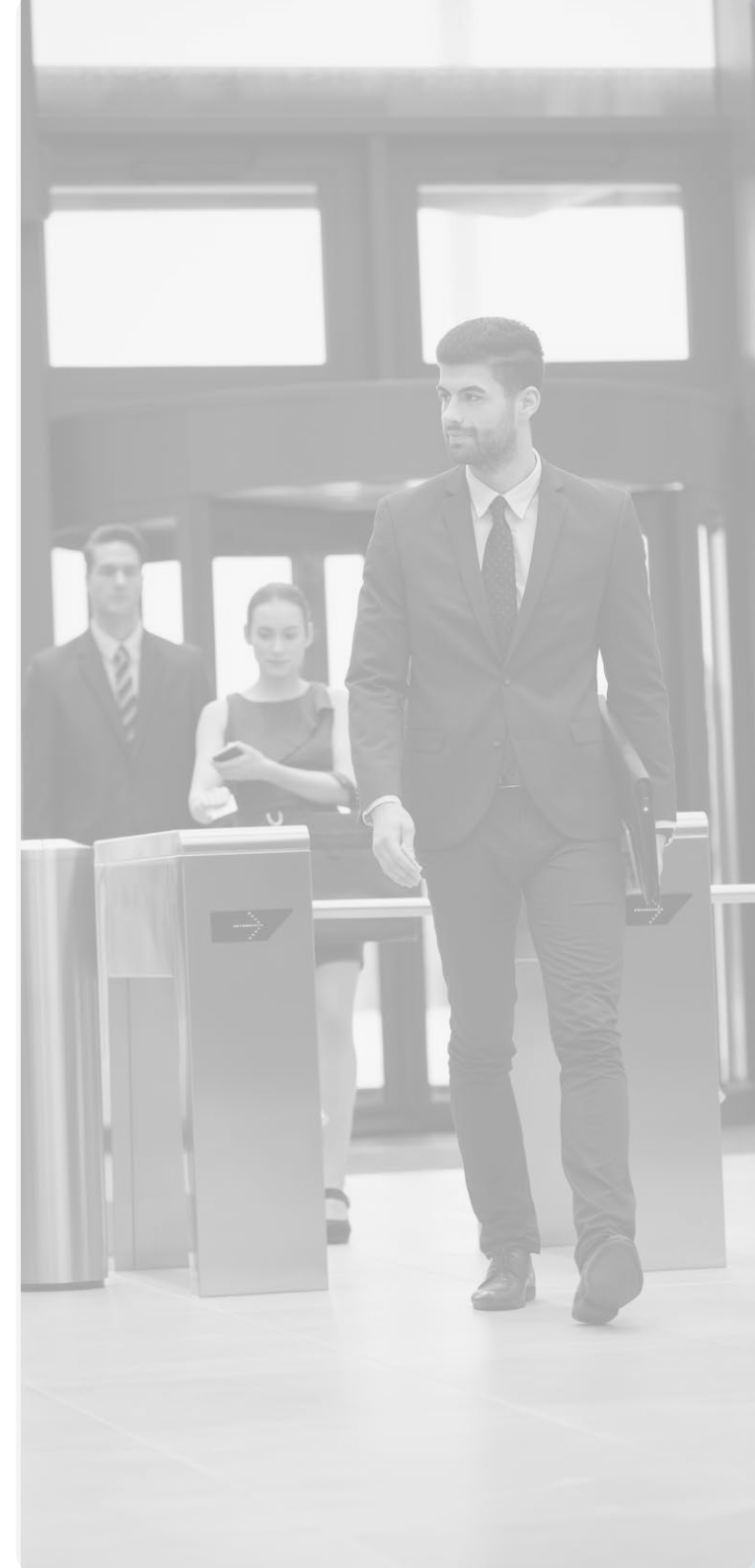
Vision Pass

Vision Pass SP

Face Recognition Terminals

## Essential components for the integration

- IDEMIA VERIF license for MSO finger enrollment unit
- Rosslare AxTraxPro™ version 28.0.3.2 or higher
- Rosslare AxTraxPro™ IDEMIA template on card integration license
- Rosslare AxTraxPro™ IDEMIA VisionPass integration license



# System architecture diagram

